

### MEGA 2



CE EN60974-7



CODE	↔	
------	---	--

MA5265	3 m	10'	
MA5266	4 m	12'	
MA5267	4,6 m	15'	

MA5200	3 m	10'	
MA5201	4 m	12'	
MA5202	4,6 m	15'	

MA5275M	3 m	10'	
MA5276M	4 m	12'	
MA5277M	4,6 m	15'	

MA5275L	3 m	10'	
MA5276L	4 m	12'	
MA5277L	4,6 m	15'	

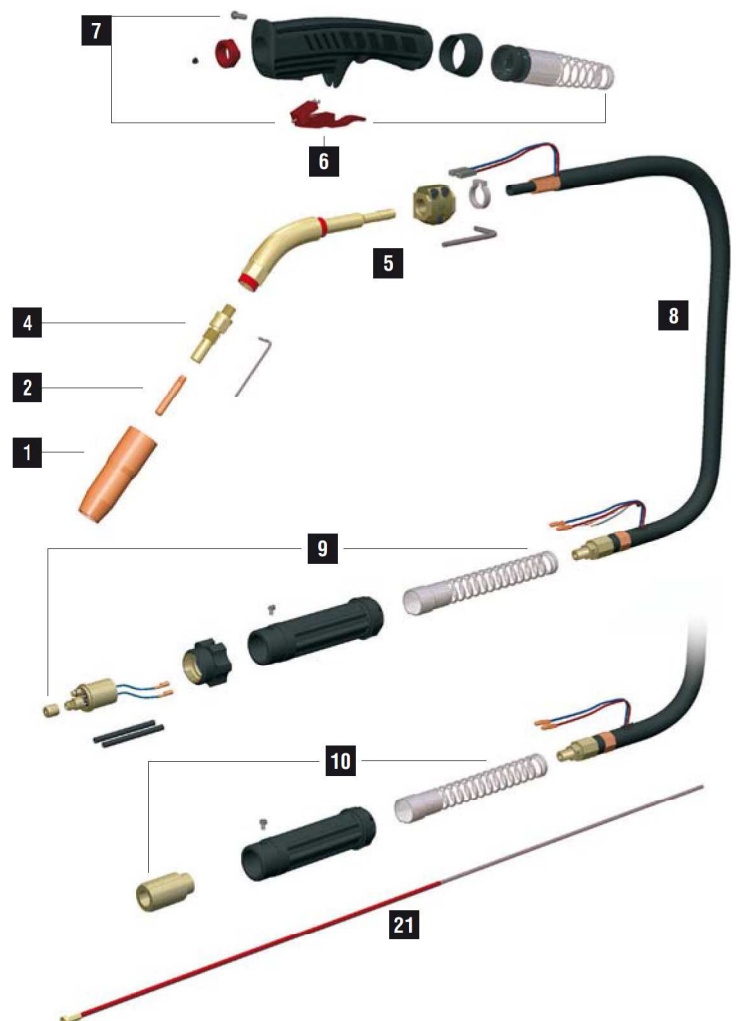
CODE	↔	
------	---	--

MA5275	3 m	10'	
MA5276	4 m	12'	
MA5277	4,6 m	15'	

<b>+</b>	
AR0170	Tweco® 1/4 KIT
AR0172	Lincoln® KIT
AR0173	Miller® KIT
KIT to be assembled by a qualified technician	

TECHNICAL DATA		
----------------	--	--

	0,9 kg	1.98 lb
<b>V PEAK</b>	113	
	0,8 ÷ 1,2 mm	.030" ÷ .045"
<b>X 60%</b>	250A CO2 - 200A Mix	



	CODE				Ø		REF	
1	MC0035		• • •				49 mm	34CT 10
1	MC0039		•		13 mm	1/2"	44,5 mm	24CT-50S 10
1	MC0040		•		16 mm	5/8"	44,5 mm	24CT-62S 10
1	MC0041		•		19 mm	3/4"	44,5 mm	24CT-75S 10
1	MC0042		•		9,5 mm	3/8"	82,8 mm	3" 23-37 10
1	MC0043		•		13 mm	1/2"	82,8 mm	3" 23-50 10
1	MC0044		•		16 mm	5/8"	82,8 mm	3" 23-62 10
1	MC0129				14 mm		71 mm	- 5
1	MC0143		•		19 mm	3/4"	82,8 mm	3" 23-75 10
1	MC0234		•		13 mm	1/2"	77,5 mm	22-50 10
1	MC0235		•		16 mm	5/8"	77,5 mm	22-62 10
1	MQ0130		• •	insulator			22,4 mm	32 10
2	MD0003-08		• • • • • • • •	1/4-28 UNF - Cu	0,8 mm	.030"	38 mm	14-30 20
2	MD0003-09		• • • • • • • •	1/4-28 UNF - Cu	0,9 mm	.035"	38 mm	14-35 20
2	MD0003-10		• • • • • • • •	1/4-28 UNF - Cu	1,0 mm	.040"	38 mm	14-40 20
2	MD0003-12		• • • • • • • •	1/4-28 UNF - Cu	1,2 mm	.045"	38 mm	14-45 20
4	EA0296							1
4	ME0019		• • • • • • • •	1/4-28 UNF - brass			57,5 mm	52FN 10
4	ME0062		• •	1/4-28 UNF - brass			50,5 mm	52 10
21	GM0012			red steel liner	1,0 ÷ 1,2 mm	.040" ÷ .045"	5 m	16,4' 42-4045-15 1

	CODE		
5	EA0297		1
5	MF0145		60° 1
5	MF0146		45° 1
5	MT0070		1
6	BX0024		trigger 10
7	MT0075		handle kit 1
8	MH0243		3 m - 10' - 25 mm²

	CODE		
8	MH0244		4 m - 12' - 25 mm²
8	MH0245		4,6 m - 15' - 25 mm²
9	AR0083		EURO TW
9	BW0020		Euro nut metal
9	FA0027		liner nut M11X1
9	MT0229		Back box kit euro 1
10	FB0395		5/8-18 UNF
10	MT0228		Back box kit 5/8-18 UNF 1

STANDARD

FOR ALL CONSUMABLES SEE PAGE 294